

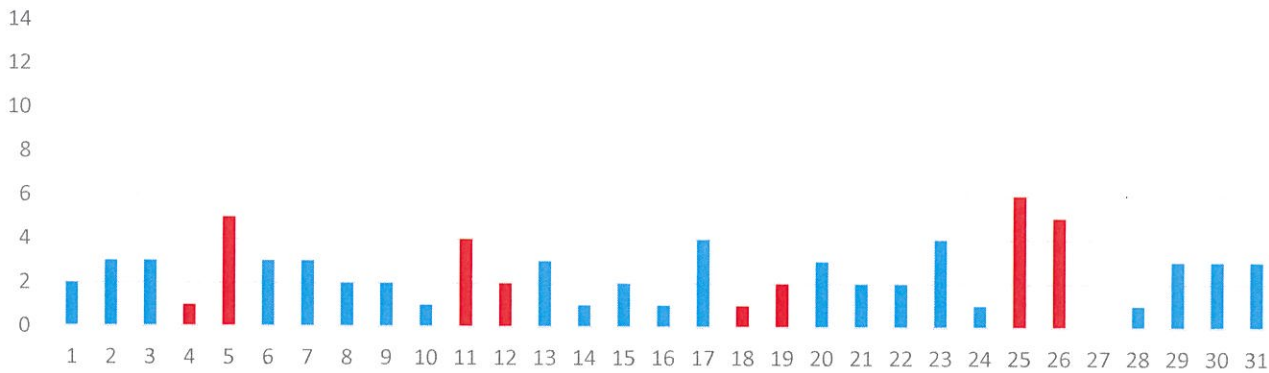
Overdoses: 78 or 2.5 per day

Day of the week:

Day	Mon	Tue	Wed	Thu	Fri	Sat	Sun	78
Count	9	7	11	13	12	12	14	
Average	2.3	1.8	2.2	2.6	2.4	3.0	3.5	

Day of the month:

Note: Red columns are Saturdays and Sundays



Hour of the day:

0	1	2	3	4	5	6	7	8	9	10	11	12	13	14	15	16	17	18	19	20	21	22	23
0	0	2	1	1	1	1	2	5	2	5	6	5	3	6	3	5	5	4	9	1	4	6	1

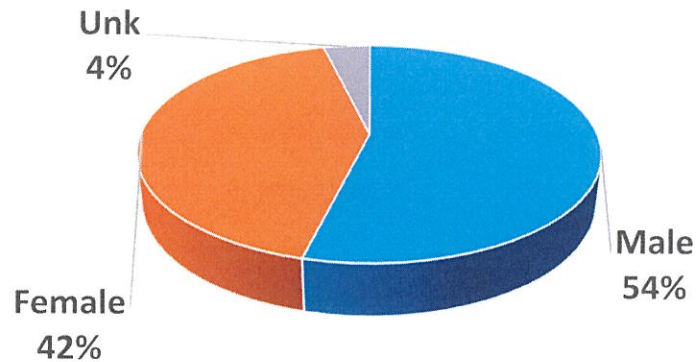
78

Section of the city:

Neighborhood	Count
Acre	7
Back Central	12
Belvidere	5
Centralville	9
Downtown	20
Highlands	3
Lower Belvidere	2
Lower Highlands	3
Pawtucketville	8
Sacred Heart	8
South Lowell	1
Total	78

Profile of patient

Sex	Count	Avg Age	Range
Female	33	42	15-79
Male	42	44	23-82



Age	#
12 and U	0
13-15	1
16-17	0
18-21	1
22	1
23	1
24	0
25	3
26	2
27	3
28	3
29	3
30	3
31	1
32	4
33	3
34	1
35	1
36	1
37	4
38	1
39	0
40	0
41	2
42	0
43	1
44	2
45	3
46	1
47	2
48	1
49	2
50	0
51-55	3
56-60	5
61-65	8
66-70	3
71 and up	4
Unk	4

19-Jan	19-Feb	19-Mar	19-Apr	19-May	19-Jun	19-Jul	19-Aug	19-Sep	19-Oct	19-Nov	19-Dec	20-Jan
86	90	111	96	111	93	97	100	83	107	73	95	78
2.8	3.2	3.6	3.2	3.6	3.1	3.1	3.2	2.8	3.5	2.4	3.1	2.5



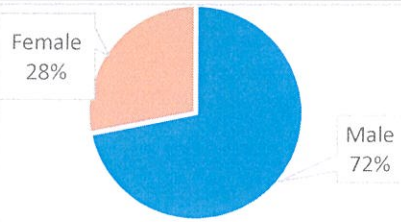
Categorized Opiate Report: Jan-20

Jan-20

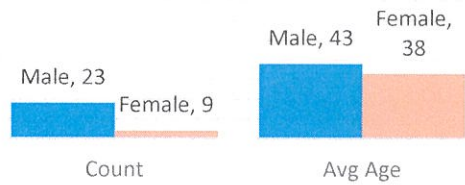
Lowell, MA

Priority of patient

Priority 1	21
Priority 2	6
Priority 3	5



75
65
55
45
35
25
15
5



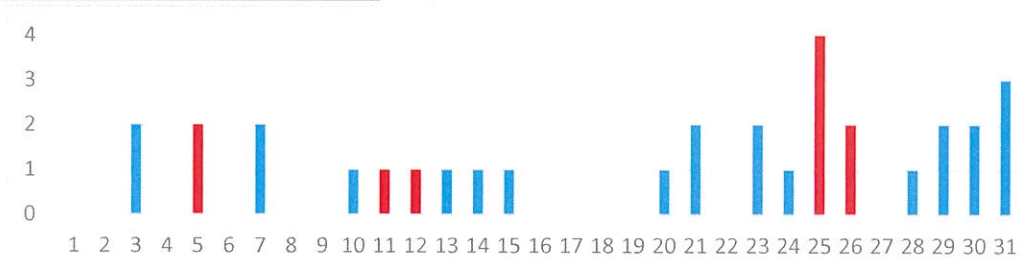
Age

12 and U	0
13-15	0
16-17	0
18-21	0
22	1
23	0
24	0
25	3
26	0
27	1
28	2
29	1
30	3
31	0
32	2
33	2
34	0
35	0
36	1
37	1
38	0
39	0
40	0
41	0
42	1
43	0
44	1
45	1
46	0
47	1
48	0
49	1
50	0
51-55	2
56-60	2
61-65	5
66-70	1
Unk	0

Day of the week: # Avg

Mon	2	0.5
Tue	6	1.5
Wed	3	0.6
Thu	4	0.8
Fri	7	1.4
Sat	5	1.3
Sun	5	1.3

Day of the month: Red are weekends (below)



Hour of the day:	0	1	2	3	4	5	6	7	8	9	10	11	12	13	14	15	16	17	18	19	20	21	22	23
	1	0	0	0	0	1	1	0	2	1	1	2	3	2	5	1	1	2	1	4	0	0	4	0

Location of patient	#
Private Residence	12
Public Location- Inside	5
Public Location- Outside	11
Residential Instituion	1

Narcaran used by:	
Lowell FD	3
Trinity ALS	0
LGH ALS	2
Park Ranger	0
Lowell PD	2
Trinity BLS	4
Other	14

Narcaran doses	
2mg - 2	32
4mg - 4	33
6-8mg - 11	34
12mg - 3	35

Neighborhood

Acre - 4	Back Central - 3	Belvidere - 1	Centralville - 3	Downtown - 10
Highlands - 1	Lwr Belvidere - 1	Lwr Highlands - 2	Pawtucketville - 5	Sacred Heart - 2

Home town of pt

Fitchburg - 1, Lowell - 19, Methuen - 1, North Billerica - 1, Roxbury - 2, Unknown - 8
--

Last 12 months All ORI calls

19-Jan	19-Feb	19-Mar	19-Apr	19-May	19-Jun	19-Jul	19-Aug	19-Sep	19-Oct	19-Nov	19-Dec	20-Jan
42	49	43	47	46	44	46	35	46	52	36	37	32
1.4	1.8	1.4	1.6	1.5	1.5	1.5	1.1	1.5	1.7	1.2	1.2	1.0

Last 12 months Priority 1 only

19-Jan	19-Feb	19-Mar	19-Apr	19-May	19-Jun	19-Jul	19-Aug	19-Sep	19-Oct	19-Nov	19-Dec	20-Jan
23	21	23	28	25	30	26	26	27	34	23	27	21
0.7	0.8	0.7	0.9	0.8	1.0	0.8	0.8	0.9	1.1	0.8	0.9	0.7

ORI - daily average

	Q1	Q2	Q3	Q4	Yr avg
2012	0.5	0.8	0.7	0.6	0.7
2013	0.7	1.2	1.1	0.6	0.9
2014	0.8	1.4	1.6	1.4	1.3
2015	1.4	1.7	1.9	1.4	1.6
2016	1.7	1.6	2.0	2.3	1.9
2017	2.0	2.3	2.8	1.8	2.2
2018	2.1	2.0	2.6	2.2	2.2
2019	1.5	1.5	1.4	1.4	1.5
2020	1.0				

Priority 1 only- daily average

	Q1	Q2	Q3	Q4	Yr avg
2013	0.1	0.2	0.3	0.3	0.2
2014	0.3	0.4	0.5	0.2	0.3
2015	0.3	0.6	0.8	0.9	0.7
2016	0.8	0.7	0.9	0.8	0.8
2017	1.0	1.0	0.9	1.3	1.0
2018	1.2	1.4	1.6	1.0	1.3
2019	1.2	1.1	1.3	1.4	1.3
2020	0.7	0.9	0.9	0.9	0.9



The following data is from Trinity EMS electronic Patient Care Reports. This data is from calls in all 13 communities Trinity provides service for. Only data from January 2020 opioid related calls are included

Trinity EMS Inc provides EMS services for the following communities in MA: Boxford, Chelmsford, Dunstable, Groveland, Haverhill, Lowell, and Dracut. In NH: Atkinson, Danville, Hampstead, Newton, Plaistow, and Sandown.

Only opiate overdoses that Trinity EMS Inc responded to are included. If someone from one of the communities listed above overdosed in another community not listed, it will not be represented in this data set.

System wide, Trinity treated 60 patients with an opioid related issue in January 2020.

Row Labels	Count of Date
LOWELL	21
(blank)	11
HVERHILL	11
DRACUT	3
PLAISTOW	2
LAWRENCE	2
ROXBURY	2
TEWKSBURY	2
KENSINGTON	1
FITCHBURG	1
NORTH	1
BILLERICA	
NEWBURYPORT	1
NEWTON	1
METHUEN	1
Grand Total	60