



Overdose Report: 19-Feb

Lowell, MA

Overdoses: 90 or 3.2 per day

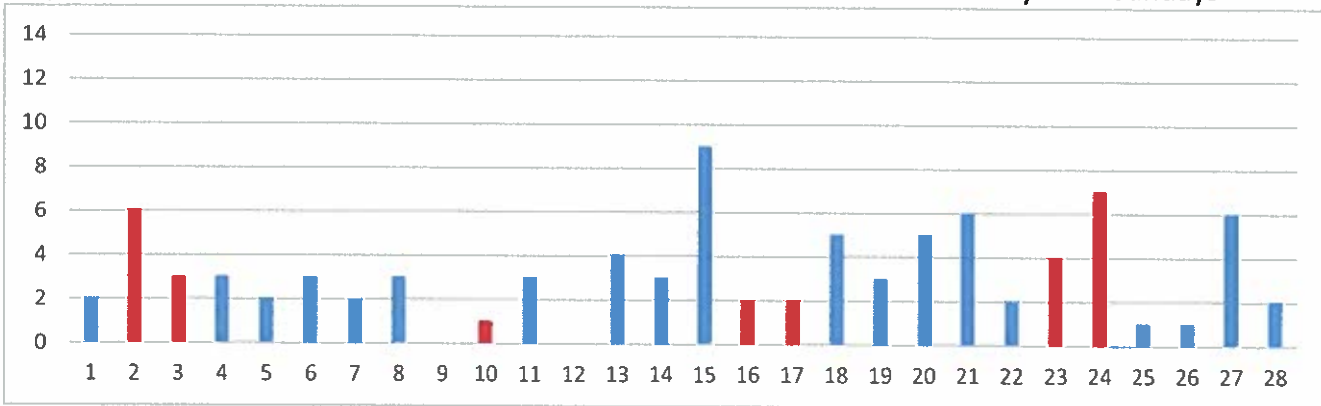
Day of the week:

Day	Mon	Tue	Wed	Thu	Fri	Sat	Sun
Count	12	6	18	13	16	12	13
Average	3.0	1.5	4.5	3.3	4.0	3.0	3.3

90

Day of the month:

Note: Red columns are Saturdays and Sundays



Hour of the day:

0	1	2	3	4	5	6	7	8	9	10	11	12	13	14	15	16	17	18	19	20	21	22	23
1	3	1	2	0	1	0	2	4	3	4	3	4	7	12	10	3	7	4	3	6	2	4	4

90

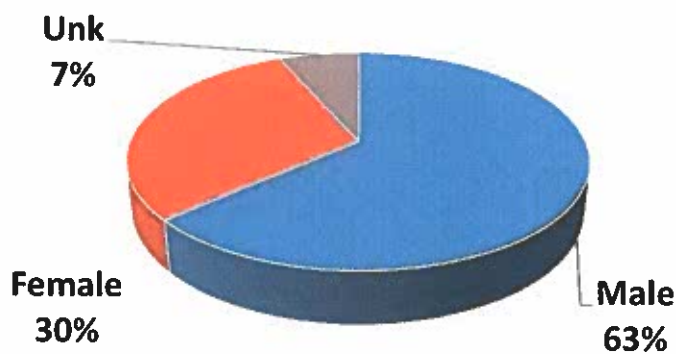
Section of the city:

Neighborhood	Count
Acre	10
Back Central	11
Belvidere	1
Centralville	6
Downtown	26
Highlands	14
Lower Belvidere	2
Lower Highlands	7
Pawtucketville	8
Sacred Heart	3
South Lowell	2

90

Profile of patient

Sex	Count	Avg Age	Range
Female	27	38	2-99
Male	57	39	24-69



Age	#
12 and U	1
13-15	1
16-17	0
18-21	0
22	0
23	1
24	2
25	5
26	2
27	2
28	5
29	4
30	2
31	7
32	2
33	2
34	3
35	1
36	3
37	0
38	2
39	3
40	3
41	2
42	1
43	1
44	0
45	3
46	2
47	2
48	6
49	1
50	2
51-55	5
56-60	3
61-65	2
66-70	2
71 and up	1
Unk	6

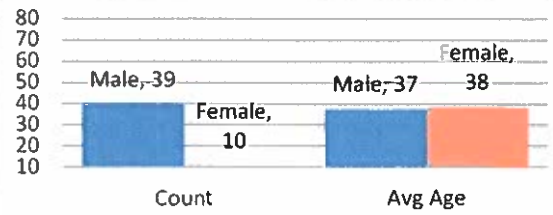
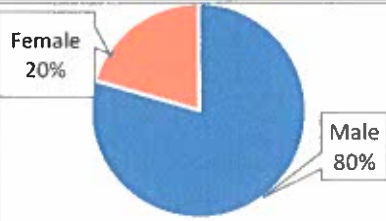
Month	18-Mar	18-Apr	18-May	18-Jun	18-Jul	18-Aug	18-Sep	18-Oct	18-Nov	18-Dec	19-Jan	19-Feb
Total	101	126	139	148	211	141	160	161	140	125	86	90
Per	3	4.2	4.5	4.9	6.8	4.5	5.3	5.2	4.7	4.0	2.8	3.2



Categorized Opiate Report: Feb-19 Lowell, MA

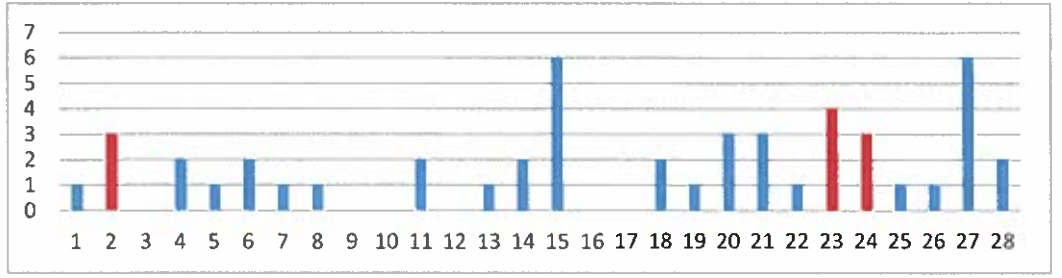
Priority of patient

Priority 1	21
Priority 2	10
Priority 3	18



Day of the week:	#	Avg
Mon	7	1.8
Tue	3	0.8
Wed	12	3.0
Thu	8	2.0
Fri	9	2.3
Sat	7	1.8
Sun	3	0.8

Day of the month: Red are weekends (below)



Hour of the day:	0	1	2	3	4	5	6	7	8	9	10	11	12	13	14	15	16	17	18	19	20	21	22	23
Count	0	1	0	1	0	0	0	1	1	3	2	1	1	2	6	8	3	4	1	3	3	2	3	2

Location of patient	#	Narcan used by:	Narcan doses
Private Residence	16	Lowell FD 5 Lowell PD 3	2mg - 7
Public Location- Inside	11	Trinity ALS 2 Trinity BLS 8	4mg - 7
Public Location- Outside	17	LGH ALS 4 Other 6	5-6mg - 2
Residential Institution	4	Park Ranger 0	8+mg - 5

Neighborhood	Acre - 8	Back Central - 6	Centralville - 2	Downtown - 15	Highlands - 7
Lwr Hglnds - 5	Pawtucketville - 2	Sacred Heart - 2	South Lowell - 2		

Home town of pt	Lowell - 30, Lawrence - 3, Woburn - 3, Lynn - 2, Billerica - 2, Dracut - 1, Plymouth - 1
-----------------	--

Last 12 months All ORI calls												
	18-Mar	18-Apr	18-May	18-Jun	18-Jul	18-Aug	18-Sep	18-Oct	18-Nov	18-Dec	19-Jan	19-Feb
Total	66	56	59	68	99	67	70	75	69	59	42	49
Avg	2.1	1.9	1.9	2.3	3.2	2.2	2.3	2.4	2.3	1.9	1.4	1.8

Last 12 months Priority 1 only												
	18-Mar	18-Apr	18-May	18-Jun	18-Jul	18-Aug	18-Sep	18-Oct	18-Nov	18-Dec	19-Jan	19-Feb
Total	44	30	34	38	51	26	42	47	46	32	23	21
Avg	1.4	1.0	1.1	1.3	1.6	0.8	1.4	1.5	1.5	1.0	0.7	0.8

ORI - daily average						Priority 1 only- daily average					
	Q1	Q2	Q3	Q4	Yr avg	Q1	Q2	Q3	Q4	Yr avg	
2013	0.7	1.2	1.1	0.6	0.9	2013	0.3	0.4	0.5	0.2	0.3
2014	0.8	1.4	1.6	1.4	1.3	2014	0.3	0.6	0.8	0.9	0.7
2015	1.4	1.7	1.9	1.4	1.6	2015	0.8	0.7	0.9	0.8	0.8
2016	1.7	1.6	2.0	2.3	1.9	2016	1.0	1.0	0.9	1.3	1.0
2017	2.0	2.3	2.8	1.8	2.2	2017	1.2	1.4	1.6	1.0	1.3
2018	2.1	2.0	2.6	2.20	2.2	2018	1.2	1.1	1.3	1.4	1.3
2019	1.6					2019	0.7				

Age
12 and U
13-15
16-17
18-21
22
23
24
25
26
27
28
29
30
31
32
33
34
35
36
37
38
39
40
41
42
43
44
45
46
47
48
49
50
51-55
56-60
61-65
66-70
Unk



The following data is from Trinity EMS electronic Patient Care Reports. This data is from calls in all 13 communities Trinity provides service for. Only data from Feb 2019 opioid related calls are included

Trinity EMS Inc provides EMS services for the following communities in MA: Boxford, Chelmsford, Dunstable, Groveland, Haverhill, Lowell, and Dracut. In NH: Atkinson, Danville, Hampstead, Newton, Plaistow, and Sandown.

Only opiate overdoses that Trinity EMS inc responded to are included. If someone from one of the communities listed above overdosed in another community not listed, it will not be represented in this data set.

System wide, Trinity treated 70 patients with an opioid related issue in Feb 2019.

Row Labels	Count of Date
LOWELL	30
HAVERHILL	8
(blank)	7
LAWRENCE	5
WOBURN	3
LYNN	2
CHELMSFORD	2
BILLERICA	2
PLYMOUTH	1
METHUEN	1
HAMPTON	1
DORCHESTER	1
NEWTON	1
EAST	1
HAMPSTEAD	1
WINCHESTER	1
GROVELAND	1
DRACUT	1
HAMPSTEAD	1
HOLLIS	1
Grand Total	70