



Overdose Report: Jul-20

Lowell, MA

Overdoses: 91 or 2.9 per day

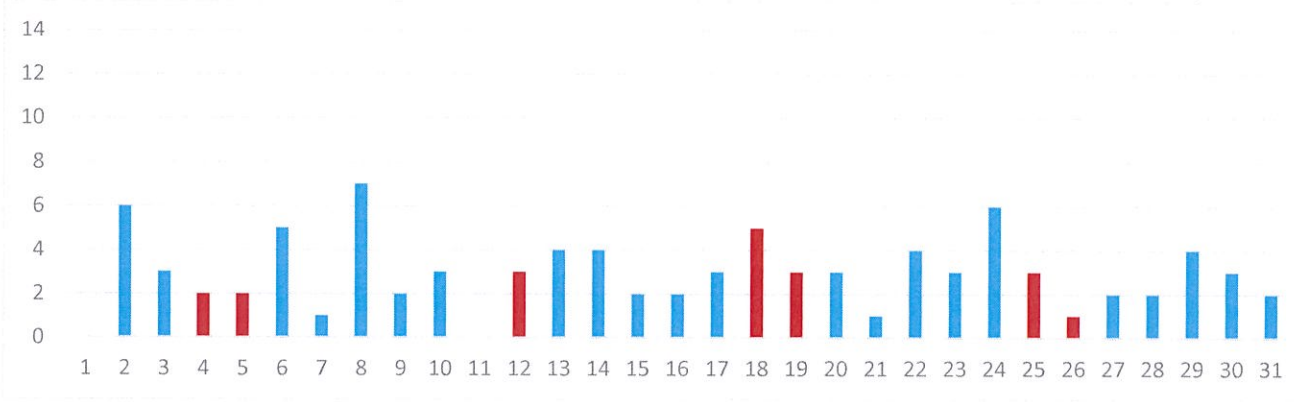
Day of the week:

Day	Mon	Tue	Wed	Thu	Fri	Sat	Sun
Count	14	8	17	16	17	10	9
Average	3.5	2.0	3.4	3.2	3.4	2.5	2.3

91

Day of the month:

Note: Red columns are Saturdays and Sundays



Hour of the day:

0	1	2	3	4	5	6	7	8	9	10	11	12	13	14	15	16	17	18	19	20	21	22	23
2	1	4	1	2	5	1	0	3	1	2	3	3	3	8	5	4	5	6	6	9	10	6	1

91

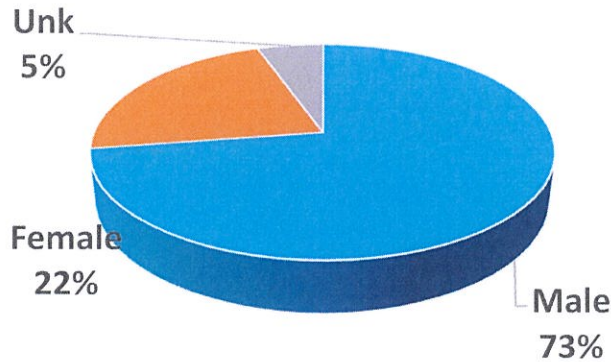
Section of the city:

Profile of patient

Neighborhood	Count
Acre	10
Back Central	21
Belvidere	1
Centralville	12
Downtown	22
Highlands	10
Lower Belvidere	2
Lower Highlands	4
Pawtucketville	7
Sacred Heart	2
South Lowell	0

91

Sex	Count	Avg Age	Range
Female	20	36	2-71
Male	66	39	1-68



Age	#
12 and U	3
13-15	0
16-17	2
18-21	5
22	1
23	1
24	2
25	4
26	0
27	2
28	3
29	2
30	2
31	2
32	1
33	7
34	0
35	4
36	3
37	3
38	3
39	2
40	0
41	3
42	0
43	0
44	0
45	2
46	1
47	1
48	0
49	5
50	1
51-55	6
56-60	6
61-65	4
66-70	4
71 and up	1
Unk	5

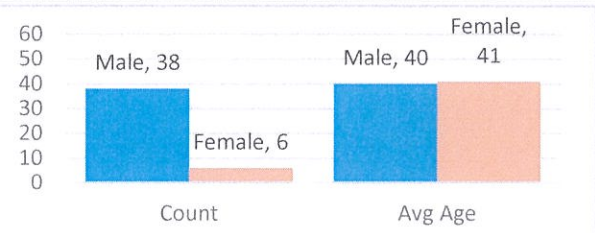
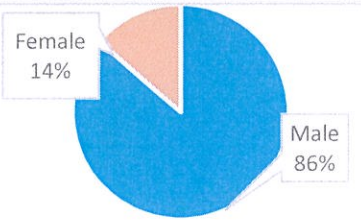
19-Jul	19-Aug	19-Sep	19-Oct	19-Nov	19-Dec	20-Jan	20-Feb	20-Mar	20-Apr	20-May	20-Jun	20-Jul
97	100	83	107	73	95	78	84	75	96	119	96	91
3.1	3.2	2.8	3.5	2.4	3.1	2.5	2.9	2.4	3.2	3.8	3.2	2.9



# Categorized Opiate Report: Jul-20 Lowell, MA

**Priority of patient**

Priority 1	22
Priority 2	8
Priority 3	14

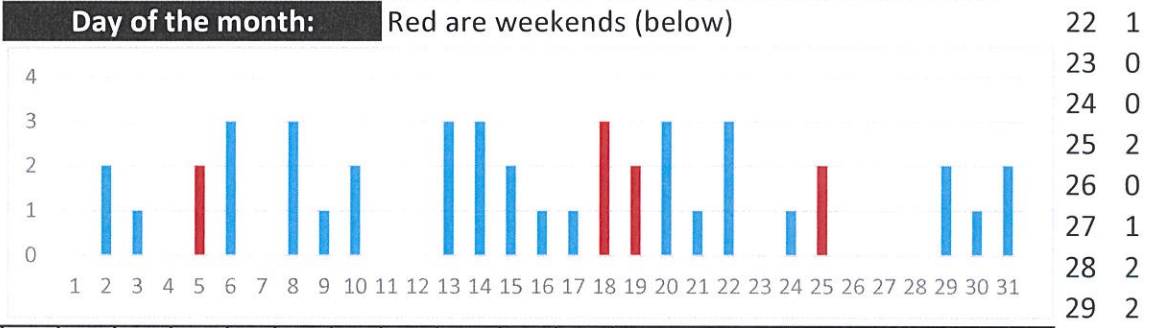


**Age**

12 and U	0
13-15	0
16-17	0
18-21	0

**Day of the week:**

Day	#	Avg
Mon	9	2.3
Tue	4	1.0
Wed	10	2.0
Thu	5	1.0
Fri	7	1.4
Sat	5	1.3
Sun	4	1.0



**Hour of the day:**

Hour	0	1	2	3	4	5	6	7	8	9	10	11	12	13	14	15	16	17	18	19	20	21	22	23
Count	2	1	2	0	1	0	0	0	1	1	2	2	2	1	4	1	2	3	1	4	4	6	3	1

**Location of patient**

Location	#
Private Residence	18
Public Location- Inside	2
Public Location- Outside	24
Residential Institution	0

**Narcan used by:**

Lowell FD	4	Lowell PD	3
Trinity ALS	0	Trinity BLS	8
LGH ALS	3	Other	8
Park Ranger	0		

**Narcan doses**

2mg - 4	32
4mg - 9	5
8mg+ - 6	0

**Neighborhood**

Acre - 1	Back Central - 15	Centralville - 7	Downtown - 10	Highlands - 2
Lwr Belvidere - 2	Lwr Highlands - 3	Pawtucketville - 3	Sacred Heart - 1	

**Home town of pt**

Andover - 1, Billerica - 1, Dracut - 1, Londonderry - 1, Lowell - 31, Nashua - 1, North Chelmsford - 2, North Weymouth - 1, Tewksbury - 2, Tyngsboro - 1, Unknown - 2

**Last 12 months All ORI calls**

Month	19-Jul	19-Aug	19-Sep	19-Oct	19-Nov	19-Dec	20-Jan	20-Feb	20-Mar	20-Apr	20-May	20-Jun	20-Jul
Count	46	35	46	52	36	37	32	31	28	48	57	49	44
Avg	1.5	1.1	1.5	1.7	1.2	1.2	1.0	1.1	0.9	1.6	1.8	1.6	1.4

**Last 12 months Priority 1 only**

Month	19-Jul	19-Aug	19-Sep	19-Oct	19-Nov	19-Dec	20-Jan	20-Feb	20-Mar	20-Apr	20-May	20-Jun	20-Jul
Count	26	26	27	34	23	27	21	17	19	26	31	25	22
Avg	0.8	0.8	0.9	1.1	0.8	0.9	0.7	0.6	0.6	0.9	1.0	0.8	0.7

	ORI - daily average					Yr avg	Priority 1 only- daily average					Yr avg	Age
	Q1	Q2	Q3	Q4	Yr avg		Q1	Q2	Q3	Q4	Yr avg		
2012	0.5	0.8	0.7	0.6	0.7	2012	0.1	0.2	0.3	0.3	0.2	51-55	2
2013	0.7	1.2	1.1	0.6	0.9	2013	0.3	0.4	0.5	0.2	0.3	56-60	6
2014	0.8	1.4	1.6	1.4	1.3	2014	0.3	0.6	0.8	0.9	0.7	61-65	0
2015	1.4	1.7	1.9	1.4	1.6	2015	0.8	0.7	0.9	0.8	0.8	66+	2
2016	1.7	1.6	2.0	2.3	1.9	2016	1.0	1.0	0.9	1.3	1.0	Unk	0
2017	2.0	2.3	2.8	1.8	2.2	2017	1.2	1.4	1.6	1.0	1.3		
2018	2.1	2.0	2.6	2.2	2.2	2018	1.2	1.1	1.3	1.4	1.3		
2019	1.5	1.5	1.4	1.4	1.5	2019	0.7	0.9	0.9	0.9	0.9		
2020	1.0	1.7	1.4			2020	0.6	0.9	0.7				





The following data is from Trinity EMS electronic Patient Care Reports. This data is from calls in all 13 communities Trinity provides service for. Only data from July 2020 opioid related calls are included

Trinity EMS Inc provides EMS services for the following communities in MA: Boxford, Chelmsford, Dunstable, Groveland, Haverhill, Lowell, and Dracut. In NH: Atkinson, Danville, Hampstead, Newton, Plaistow, and Sandown.

Only opiate overdoses that Trinity EMS Inc responded to are included. If someone from one of the communities listed above overdosed in another community not listed, it will not be represented in this data set.

System wide, Trinity treated 66 patients with an opioid related issue in July 2020.

Row Labels	Count of Date
LOWELL	33
HAVERHILL	13
NORTH CHELMSFORD	2
TEWKSBURY	2
DRACUT	2
(blank)	2
SUFFOLK	1
NORTH WEYMOUTH	1
TYNGSBORO	1
WINDHAM	1
PLAISTOW	1
BILLERICA	1
LEOMINSTER	1
NEWTON	1
LONDONDERRY	1
FREMONT	1
ANDOVER	1
NASHUA	1
<b>Grand Total</b>	<b>66</b>